

AR3521-D9/7

Premium 16 Gauge 304 Stainless Steel Double Bowl Undermount Sink

Model: AR3521-D9/7



Dimensions

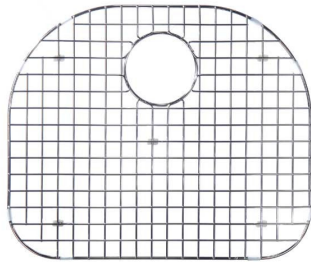
- Overall Size: 35" x 20 3/4"
- Left Bowl: 21-1/2" x 19" x 9"D
- Right Bowl: 10-1/2" x 16" x 7"D
- Drain Opening: 3 1/2"

Optional Accessories

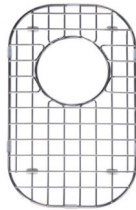
- Left Bowl Sink Grid: BG-21S
- Right Bowl Sink Grid: BG-19S
- Sink Strainer
- Stainless Steel Sink Cleaner

Features

- Heavy 16 gauge 304 stainless steel
- Proprietary V-Therm Shield™
- Provides superior sound deadening and thermal retention.
- High luster satin finish
- Stain and corrosion resistant
- Bulk Packs Available (4 Pieces Per Pack)



BG21S GRID
Optional



BG19S GRID
Optional



Sink Strainer
Optional

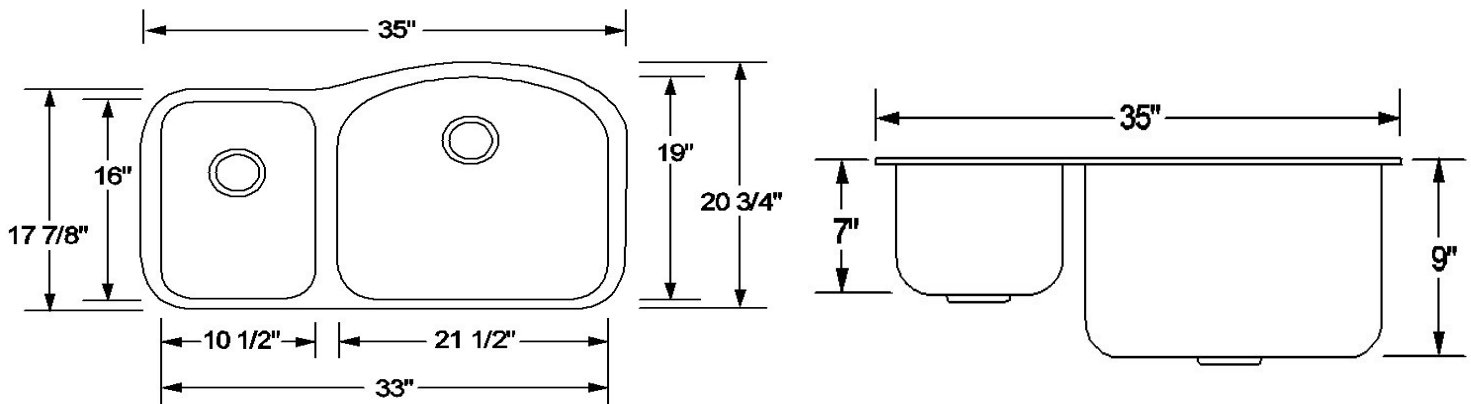


Stainless Steel Sink Cleaner
Optional

Reverse Model Available: Model AR3521-D9/7 is available with reverse bowls. Specify model AR3521-D9/7R



Complies with ASME A112.19.3-2000



Product Specification

The undermount sink shall be 35" in length and 20 3/4" in width. Sink shall be made of 16 gauge stainless steel. Sink shall have brushed finished rim. Sink shall be a double bowl. Sink shall be an Artisan model AR3521-D9/7.